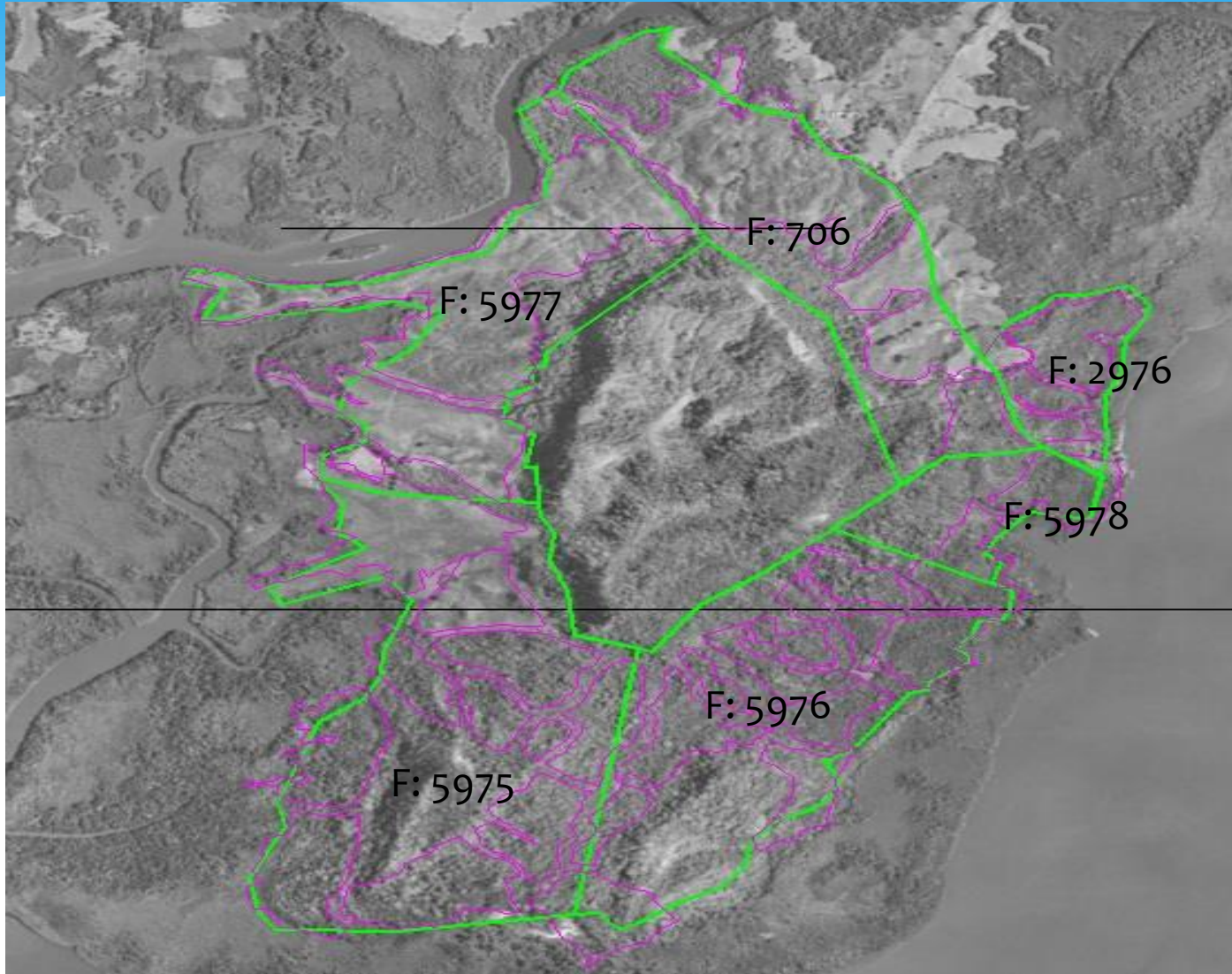


GRUPO DE FINCAS



FINCA N° 5977



SUPERFICIE INSCRITA:

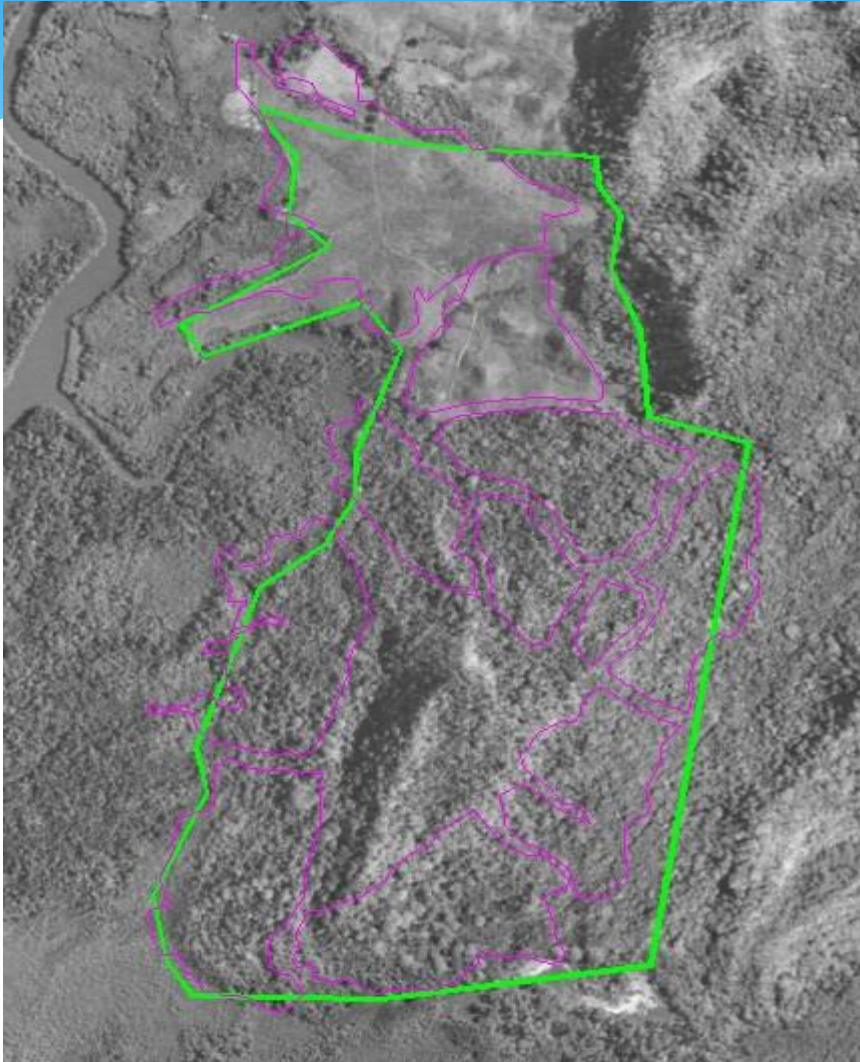
206 HAS + 6,600.00 MTS²

PARCELAS DE TECA:

1997: 114 HAS + 8,477.49 MTS²

1998: 38 HAS + 3,942.94 MTS²

FINCA N° 5975



SUPERFICIE INSCRITA:

304 HAS + 6,400.00 MTS²

PARCELAS DE TECA:

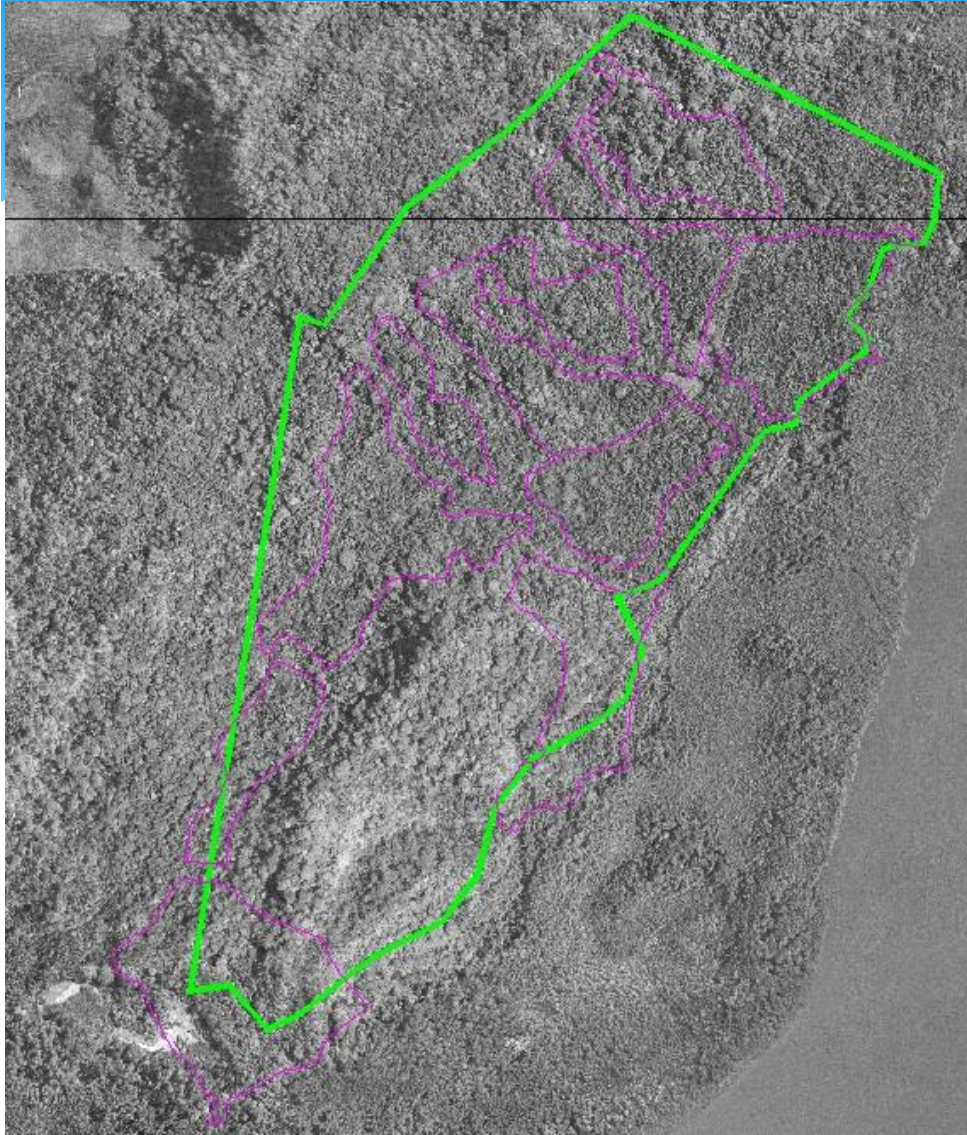
1998 48 HAS + 7,542.14 MTS²

1999 19 HAS + 7,098.50 MTS²

2006 95 HAS + 1,247.00 MTS² (5 parcelas)

2008 100 HAS + 1,383.00 MTS² (4 parcelas)

FINCA N° 5976



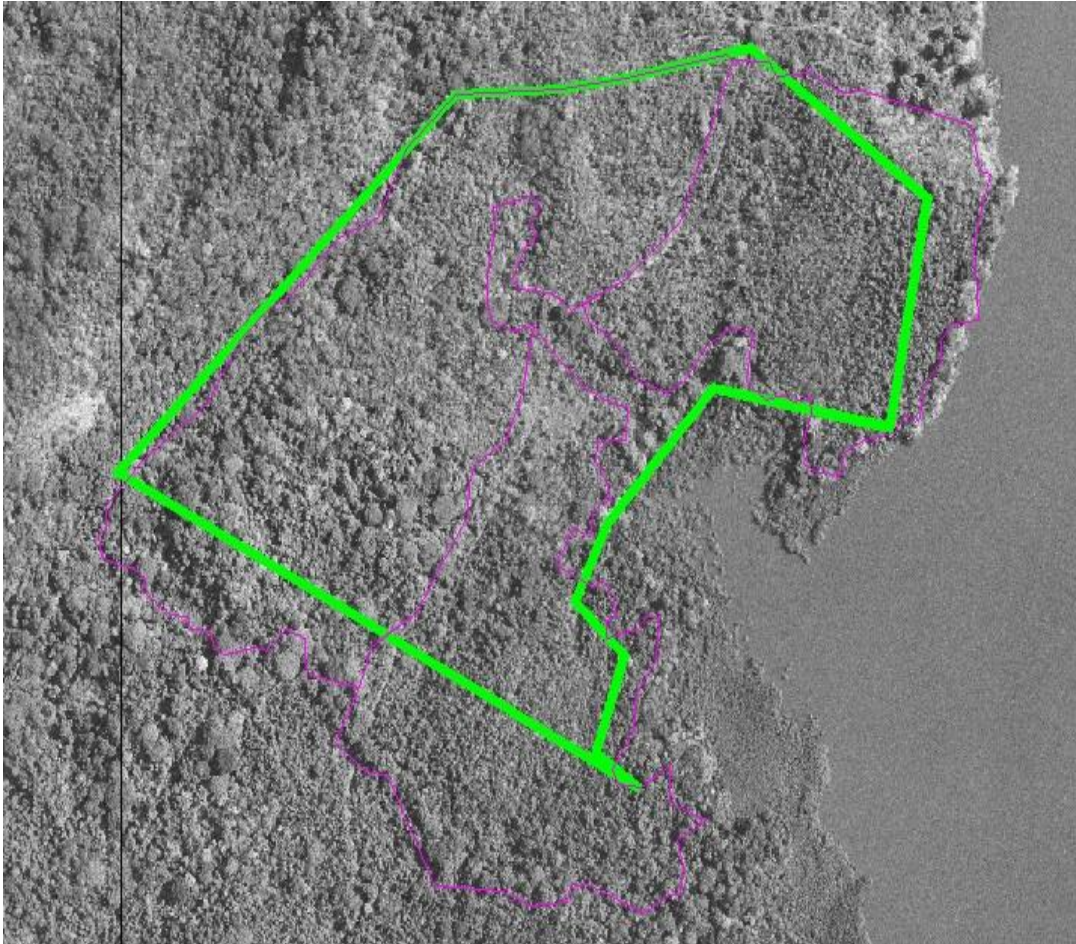
SUPERFICIE INSCRITA:

304 HAS + 6,400.00 MTS²

PARCELAS DE TECA:

2003	36 HAS + 1,572.00 MTS ²	3 parcelas
2004	52 HAS + 6,537.00 MTS ²	4 parcelas
2006	13 HAS + 1,804.00 MTS ²	2 parcelas
2008	28 HAS + 9,038.32 MTS ²	2 parcelas

FINCA N° 5978

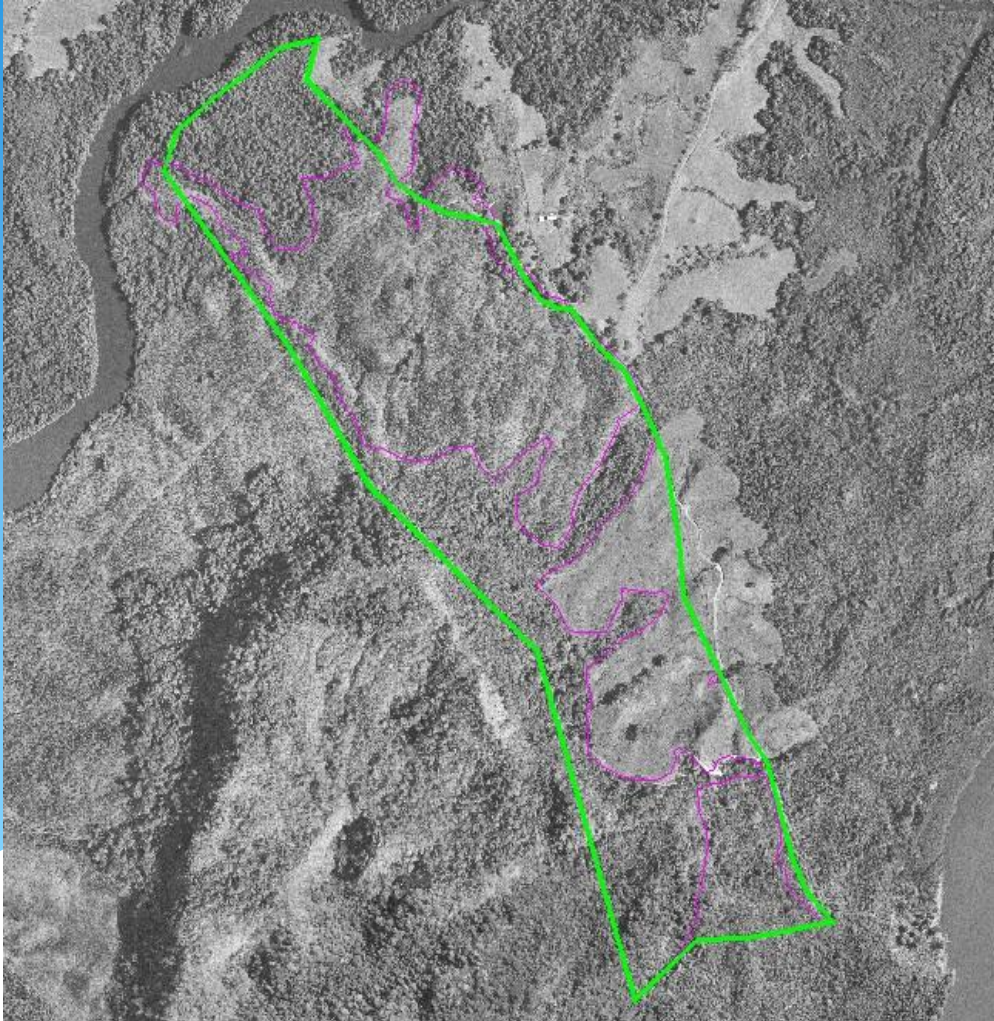


SUPERFICIE INSCRITA:
40 HAS + 0,600.00 MTS²

PARCELAS DE TECA:
2002 36 HAS 9,516.89 MTS²
2003 31 HAS 9,104.00 MTS²

NOTA: LA SUPERFICIE TOTAL DE LAS PARCELAS DE TECA ES DE 68 HAS + 8,621.00 MTS², LO CUAL REPRESENTA UNA CANTIDAD MAYOR A LA INSCRITA EN REGISTRO PÚBLICO. ESTA DISCREPANCIA SE DEBE A QUE SE A UTILIZADO ORILLAS DE MAR.

FINCA N° 706

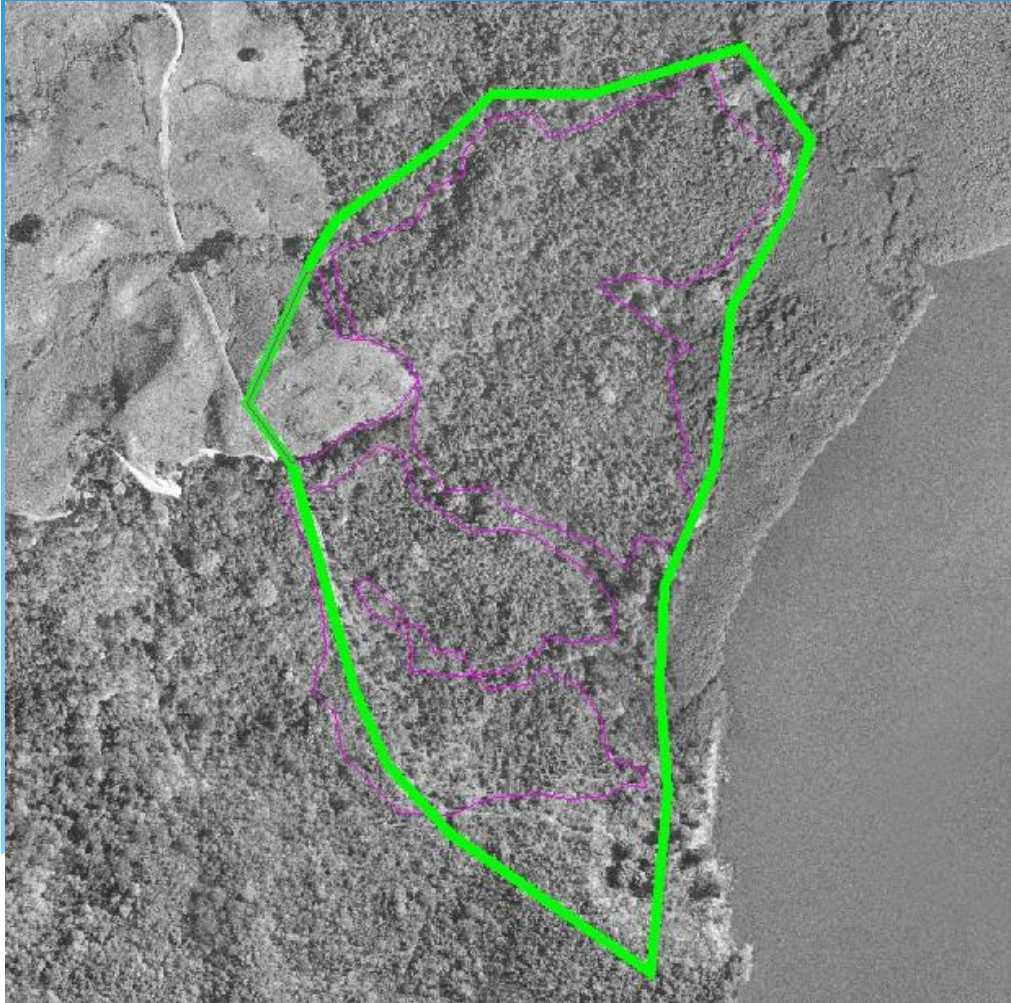


SUPERFICIE INSCRITA:
152 HAS + 3,822.00 MTS²

PARCELAS DE TECA:

1996	82 HAS + 7,599.16 MTS ²
1999	33 HAS + 1,997.00 MTS ²
2003	11 HAS + 6,086.00 MTS ²

FINCA N° 2976



SUPERFICIE INSCRITA:
45 HAS + 8,861.00 MTS²

PARCELAS DE TECA:

1999 3 HAS + 0,025.41 MTS²

2002 34 HAS + 4,327.10 MTS² 2 parcelas